

## **FOR IMMEDIATE RELEASE**

Contact: Debi Sciranka, PR Director  
Prime Stage Theatre  
Phone: 412.965.0563  
Email: [dsciranka@primestage.com](mailto:dsciranka@primestage.com)

### **Prime Stage Theatre Presents *The Miracle Worker* November 3 – 12, 2023**

**By William Gibson and Directed by Wayne Brinda**

**MORE INFO AND TICKETS: [Events - Prime Stage](#)**

(Pittsburgh, PA – October 9, 2023) Prime Stage Theatre's 27th season of courage and discovery brings literature to life with inspiring productions, new partnerships, special events and our accessibility outreach.

The performance season kicks off in early November with the epic drama *The Miracle Worker* by William Gibson. Directed by Wayne Brinda, the story which was immortalized on screen by Anne Bancroft and Patty Duke is a **Tony Award-winning play**.

"Directing *The Miracle Worker* is inspiring yet challenging. Through my research it's incredible what Helen Keller was able to accomplish in her life being blind and deaf, but we also need to recognize Annie Sullivan, her teacher which goes along with Prime Stage's education and accessibility outreach.

"The world is full of amazing opportunities for everyone, but let's work together to give people the opportunity to experience 'Bringing Literature to Life,' said **Wayne Brinda, Ed.D., Director**.

Explore the boundaries of the senses as we venture inside this true story of young Helen Keller, who was blind, deaf, and struggling to connect. Her teacher, Annie Sullivan, is our courageous guide to reach Helen's isolation and bring her into contact with the outside world.

"Language grows out of life, out of its needs and experiences...Language and knowledge are indissolubly connected; they are interdependent. Good work in language presupposes and depends on a real knowledge of things," said Annie Sullivan.

Helen Keller lost her sight and hearing at 19 months due to illness, yet, despite her disabilities she went on to become an American author, disability rights advocate, political activist and lecturer. Keller has become a worldwide symbol for children to overcome any obstacle.

After an education at both specialist and mainstream schools, Keller attended Radcliffe College of Harvard University and became the first deafblind person in the United States to earn a Bachelor of Arts degree.

Keller campaigned for those with disabilities, for women's suffrage, labor rights, and world peace. In 1909, she joined the Socialist Party of America. She was a founding member of the American Civil Liberties Union.

The role of Helen Keller is portrayed by 5<sup>th</sup> grader, **Kendall Knotts**. She is no stranger to the stage. She has been seen as Madeline in *Madeline's Christmas*, as Jojo in *Seussical Jr*, as Charlie in *Willy Wonka Jr* and in the ensemble of *Captain Louie Jr*, where she learned ASL and was fortunate to work with students from the Western PA School for the Deaf.

**Holland Taylor** portrays Annie Sullivan making her Prime Stage Theatre debut. She earned her B.A. degree in Theatre Performance at Xavier University in Cincinnati and some of her past favorite roles include *Buried Child* (Shelly), *The Wolves* (#25) and *The Curious Incident of the Dog in the Night-Time* (Siobhan).

We are proud to be partnering with the Helen Keller National Center in Maryland to insure authenticity of our production. We had the honor of working with, **Maryjean Shahn**, who worked for years as a counselor/trainer for deafblind and deaf individuals with multiple intellectual disabilities at Helen Keller National Center for the Deafblind.

Our productions are more than just plays. We want to immerse the audience in the experience. We have made a discovery that Helen Keller has a Pittsburgh connection and a member of the Oakmont Historical Society, **Gary Rogers**, will provide a post-show discussion on that connection after the opening night performance on Saturday, November 4th at 7:30 PM.

*The Miracle Worker* isn't just a play about words and communication—it's about the twin processes of learning and teaching. This is a wonderful production for families to share. The content opens possibilities for conversations between parents and children about the importance of language and the challenges of teaching children with disabilities.

The *Miracle Worker* is appropriate for audiences grade 6 through adults -- perfect for families!

- Location

All Prime Stage Theatre Performances are held at the New Hazlett Center for Performing Arts, 6 Allegheny Square East, Pittsburgh, PA 15212.

- Runtime

The runtime for this show is approximately two hours with one 15 minute intermission.

- Ticket Information

To purchase tickets: [AudienceView Professional \(ovationtix.com\)](https://www.ovationtix.com)

**Special Dates:**

**Preview:** Friday, November 3rd at 7:30pm – Pay What You Can

**Opening Night:** Saturday, November 4th at 7:30pm

**Sensory Inclusive:** Saturday, November 11th at 2:30pm – Pay What You Can

**Audio Describe:** Sunday, November 12th at 2:30pm

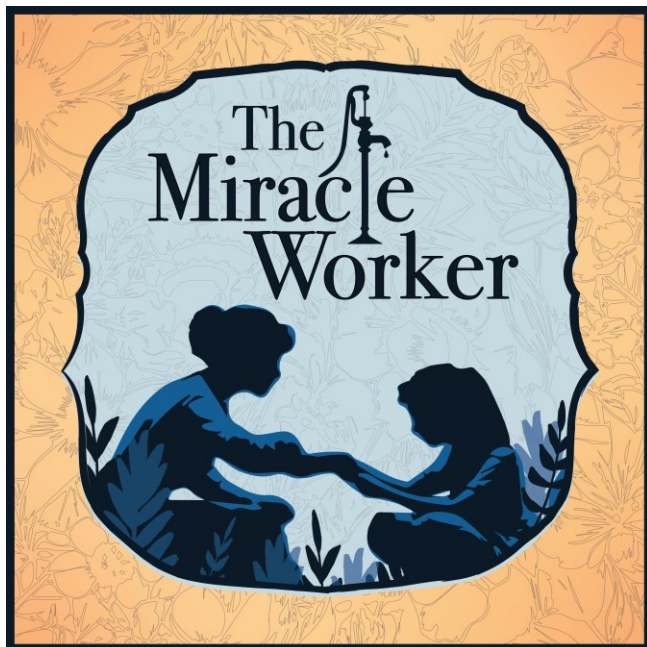
**ASL / Live Caption:** Sunday, November 12th at 2:30pm

Prime Stage Theatre is committed to providing an accessible experience that is usable and easy to navigate. To accomplish that goal we work as a team with people who experience disabilities and the organizations that represent them.

With our sensory-inclusive performance the last Saturday of each production at 2:30 PM, we provide a social story with pre-theater preparatory activities to understand and anticipate what might happen at a performing arts experience.

The last Sunday of each performance we offer Audio Description for the blind and visually impaired, along with the signed interpreted and the real-time live captioning for patrons who are deaf or have hearing loss.

- For more information about our accessibility outreach visit our website at [www.primestage.com/accessibility](http://www.primestage.com/accessibility).





Kendall Knotts (portraying Helen Keller)

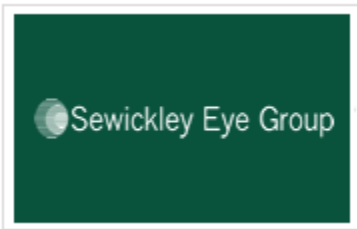


Holland Taylor (Portraying Annie Sullivan)



From Left to right: Kendall Knotts (portraying Helen Keller) and Holland Taylor Portraying Annie Sullivan)

Our partners for the production:



###